

# Unity Camp Out

Bring: Salad or Casserole or Dessert

## Meals

### Saturday POT LUCK Dinner:

Hotdogs - Hamburgers & fixings provided .....

Bring something to share

### Sunday Breakfast:

Eggs - Bacon - Pancakes provided.....

Bring fruit / juice /?? To share

Coffee provided at all Meals & Meetings

*All other meals - on your own*



Kids Events

Horse Shoes



## Meetings



### Speaker:

Friday - 7:00pm  
Saturday - 6:30pm  
Sunday - 9:30am

### Open Discussion:

Friday - 8:30pm  
Saturday - 6:30am / 8:00pm  
Sunday - 6:30am



## Annual Unity Camp Out

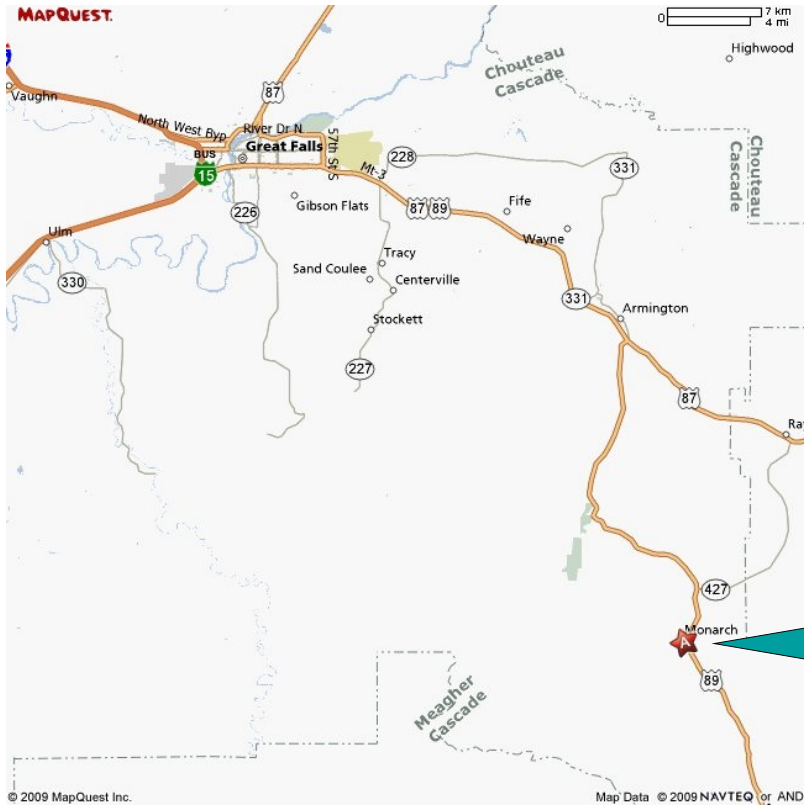
Same location as last year..... Old Hughsville Rd in Monarch MT  
(Map on back side)

NEW

Commerical Porta-Potties  
More Meetings

June 25 - 26 - 27 (Friday - Sunday)





**7<sup>th</sup> Tradition**

Consider...the cost of the:

- Meals
  - Food
  - plates/napkins/utensils
- Coffee
- Porta-Potties
- Generators
- Tables

*"We are self-supporting..."*

*Please contribute as you are able*

**Living the Principles.....**

All of us look forward to a relaxing - fun time ..... this is reasonable

We all are asked to help with:

- Pets - Dogs:      Actions and Barking under control of the owners.
- Children:        Supervised to minimize risk of injury.

**...Progress not perfection...**

**Like to Help!**

Please call someone on the contact list.

**Contact**

Ray - 231-0134  
 Lee - 868-7528  
 Steve - 453-5805  
 Rod - 781-2784  
 Jack - 899-1410  
 Fred - 453-3168

